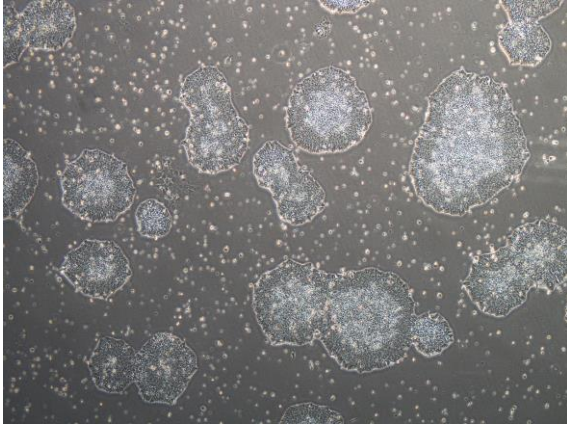
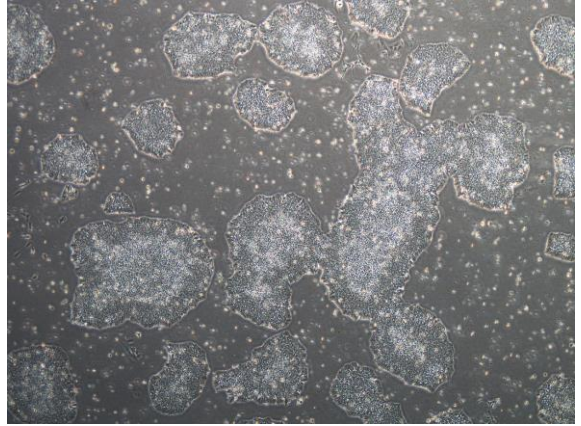


【 CiRA-j-1137 】 Morphology of iPSC colonies

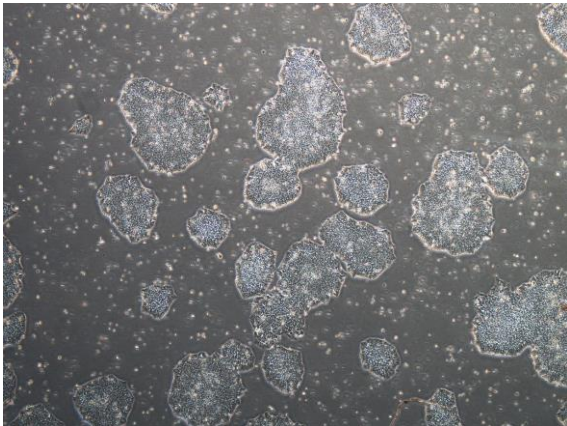
CiRA-j-1137-A: passage-2



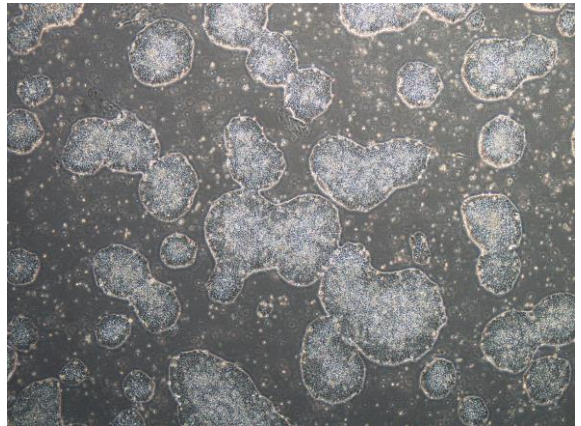
CiRA-j-1137-B: passage-2



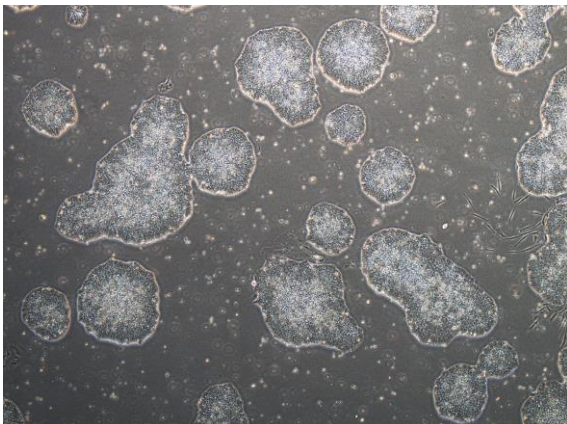
CiRA-j-1137-C: passage-2



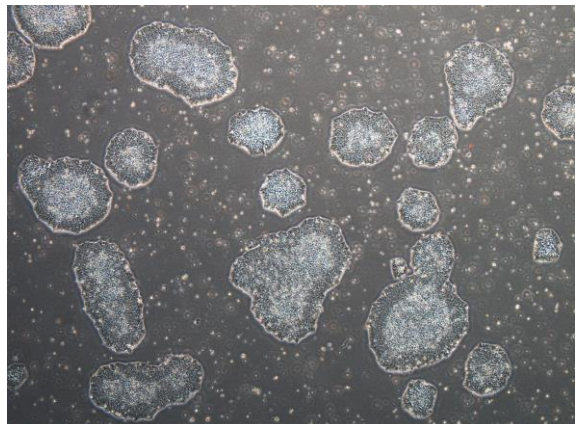
CiRA-j-1137-D: passage-2



CiRA-j-1137-E: passage-2



CiRA-j-1137-F: passage-2



(All images were captured at 4x magnification)